

# HOSPITALS FACE PROFOUND FINANCIAL STRAIN

Nationally,  
2022 expenses are  
projected as much as

# 25%

## HIGHER THAN BEFORE THE PANDEMIC

MORE THAN  
**\$11**  
BILLION  
OVER 2021



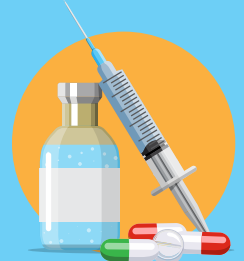
**Supplies**

MORE THAN  
**\$86**  
BILLION  
OVER 2021



**Staffing**

MORE THAN  
**\$1**  
BILLION  
OVER 2021



**Drugs**

**-25%**  
2020\*

**-4%**  
2021\*

**-102%**  
January-June  
2022\*

## Hospitals pay more to provide care than they receive in payments.

The difference between care-related revenue and expenses — hospitals' operating margins — is far below pre-pandemic levels, even with federal pandemic relief included.

\*Operating margins  
inclusive of all stimulus  
funds relative to 2019



## More than half of all hospitals will lose money on care in 2022.



The Hospital + Healthsystem  
Association of Pennsylvania  
haponline.org