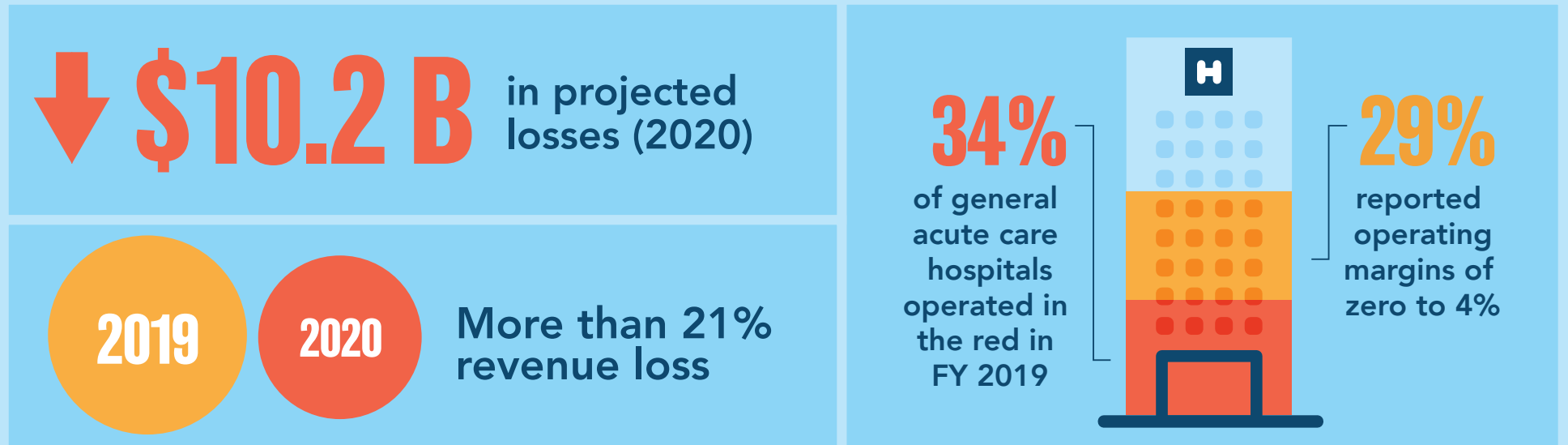


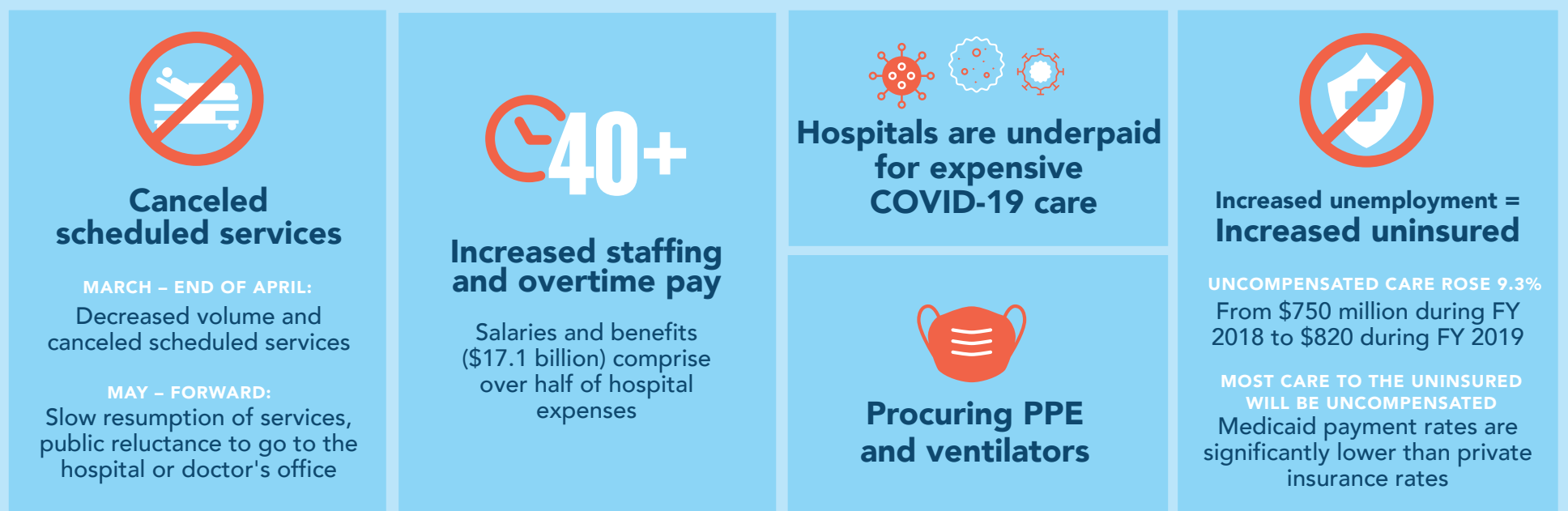
# HOSPITAL LOSSES IMPACT PENNSYLVANIA COMMUNITIES

The COVID-19 pandemic is threatening the sustainability of Pennsylvania hospitals and the communities they serve.

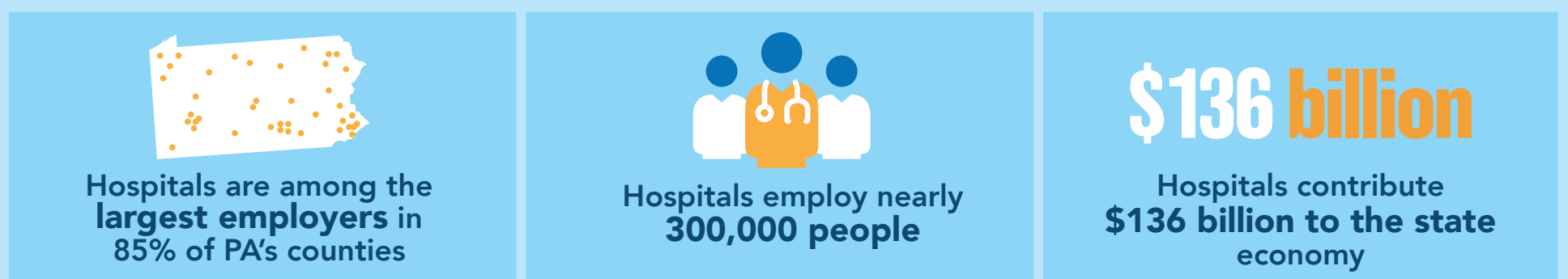
## FINANCIAL CHALLENGES FACING HOSPITALS



## CAUSES OF CURRENT AND PROJECTED LOSSES



## ECONOMIC DRIVERS IN PA COMMUNITIES



## RELIEF NEEDED VS. RELIEF OFFERED

